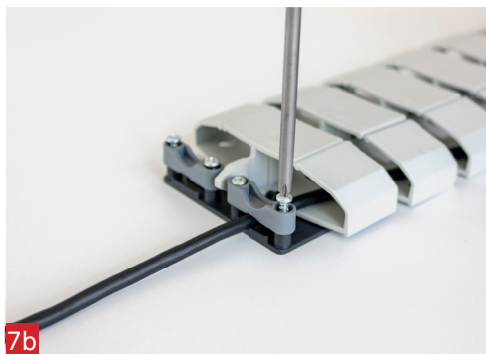
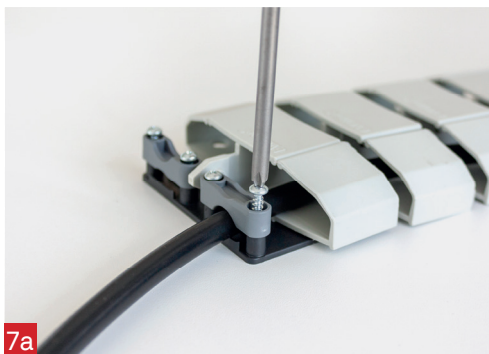
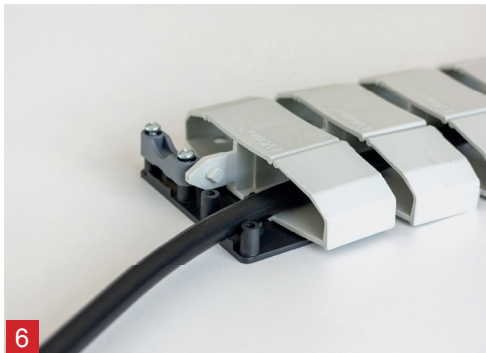
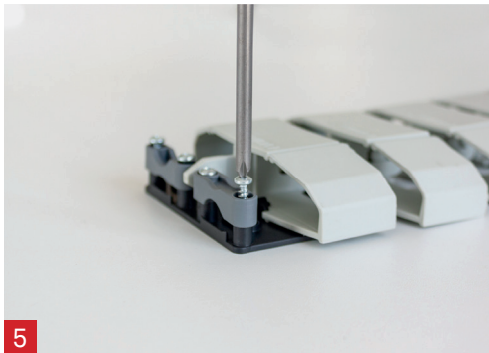
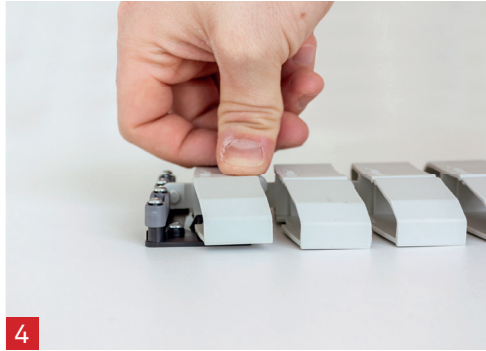
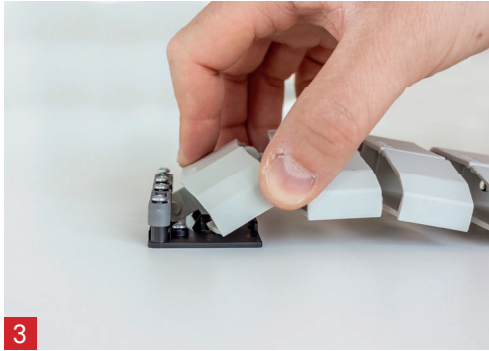
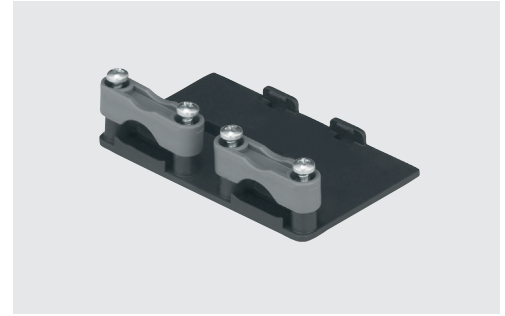
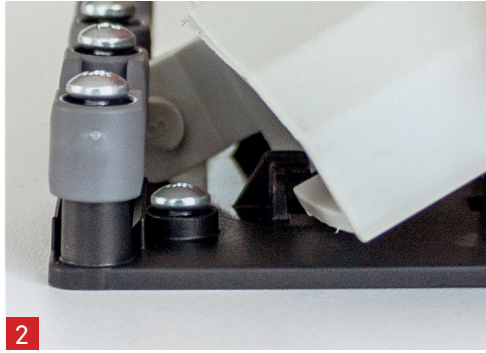
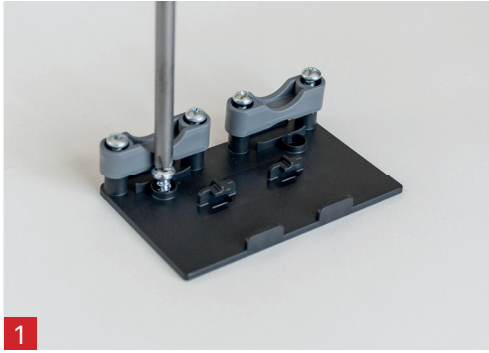


Bedienungs- und Montageanleitung  
Operating and assembly instructions  
Instructions d'utilisation et d'installation



EVoline®

Schulte Elektrotechnik GmbH & Co. KG

Jüngerstraße 21

D-58515 Lüdenscheid

Telefon +49 23 51 / 94 81-0

Telefax +49 23 51 / 4 26 58

Email info@schulte.com

[www.evoline.com](http://www.evoline.com)

**schulte** invented and made by  
elektrotechnik Schulte Elektrotechnik,  
Lüdenscheid, Germany

Stand 07/2020  
Technische  
Änderungen  
vorbehalten