

Lounge Assembly Instructions

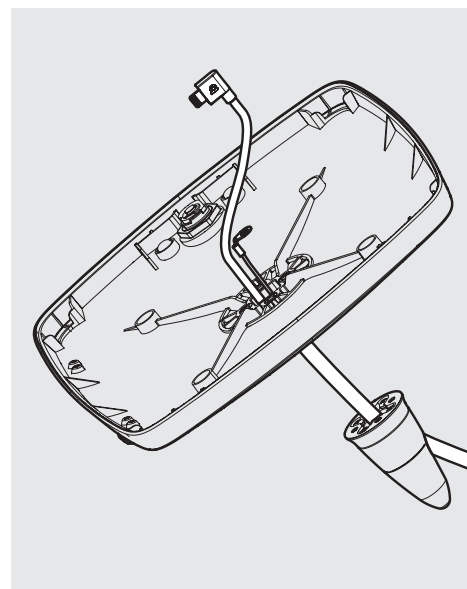
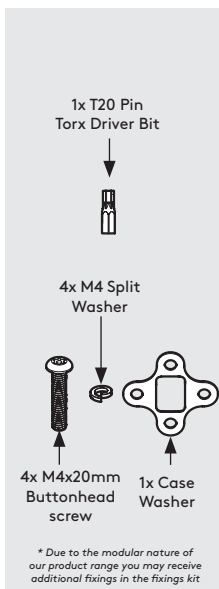
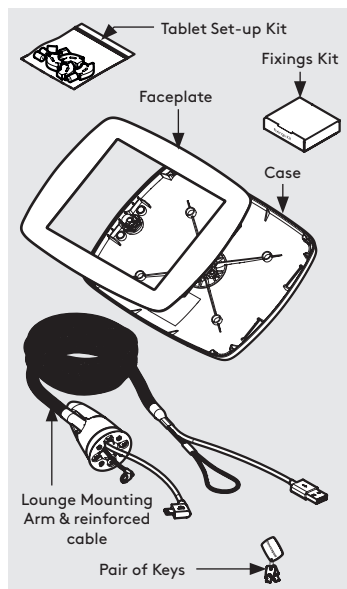
Tools Required:

- Socket Driver

Sheet Code: BP-IM-044_REV2

Release Date: 28/10/2019

Copyright 2016 Spotspot Ltd. (T/A Bouncepad) all rights reserved. Confidential, no part of this publication may be reproduced or transmitted in any form without the written permission of the copyright holder.



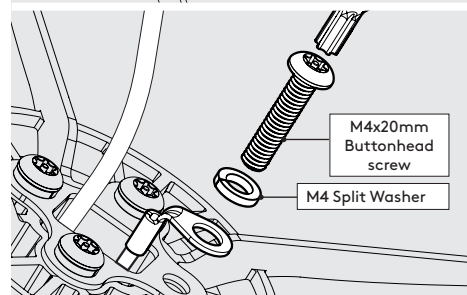
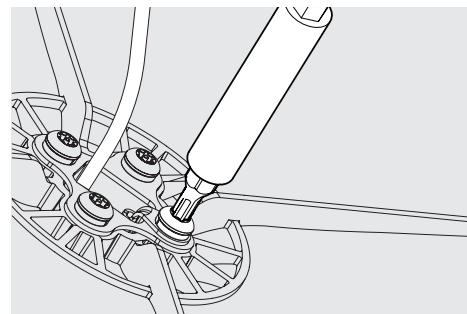
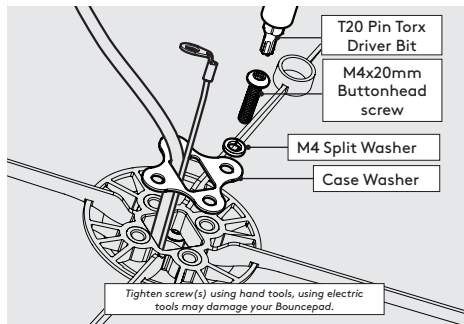
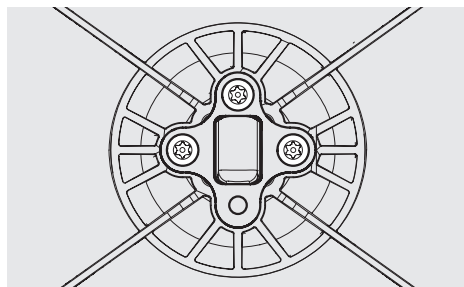
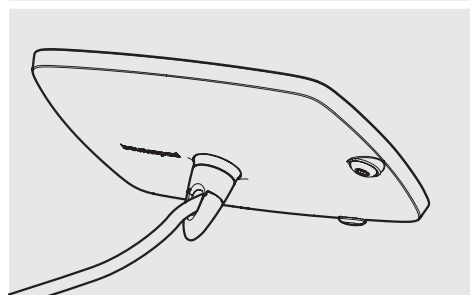
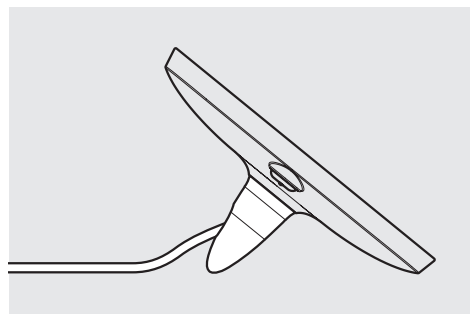
In the Box



Fixings List



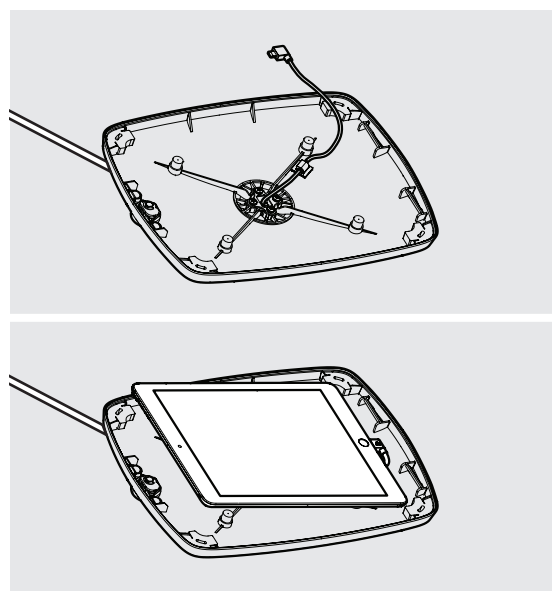
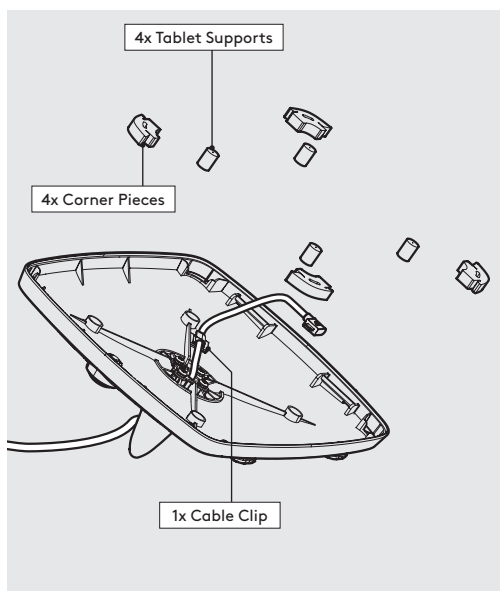
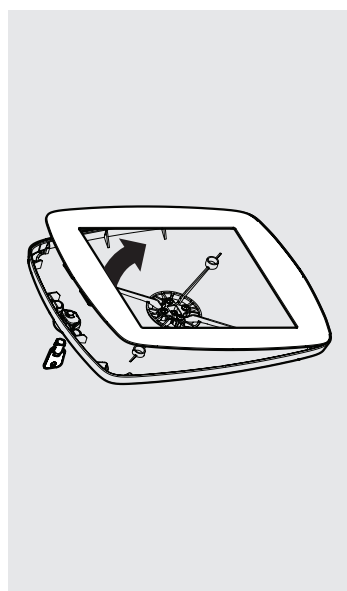
1 Feed the Bouncepad Lounge reinforced cable through the Case as shown.



2 Ensure the Lounge Cone is orientated correctly as shown, with the cable exiting the Cone at top.

3 Secure the Lounge Cone to the Case.

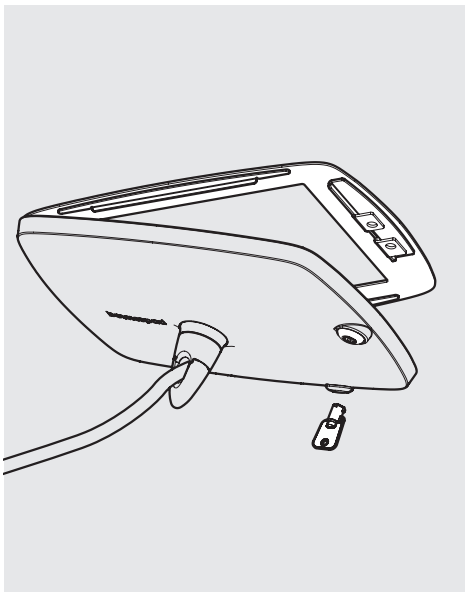
4 With the remaining fixings, secure the reinforced cable to the Case.



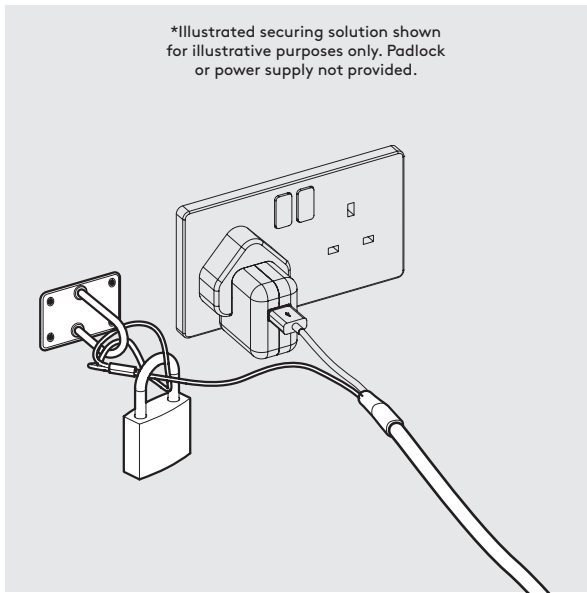
5 Unlock & remove the Faceplate from the Bouncepad Case.

6 Install the Tablet Setup Kit. Each kit is specific per tablet device and Bouncepad Case.

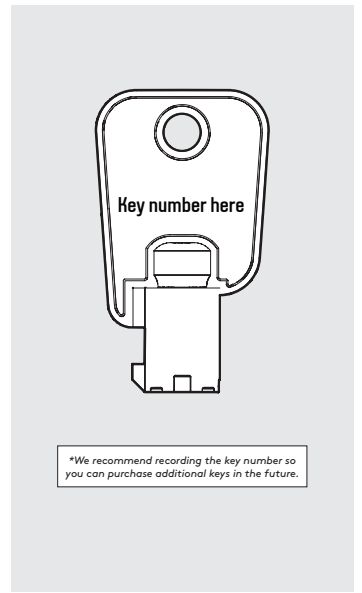
7 Install the tablet into the Case, connecting the power cable to the tablet.



8 Locate & lock the Faceplate to the Case.



9 Connect the Tablet cable to its power supply & turn on. We recommend locking the reinforced cable to an immovable object for security.



7 Installation is now complete.