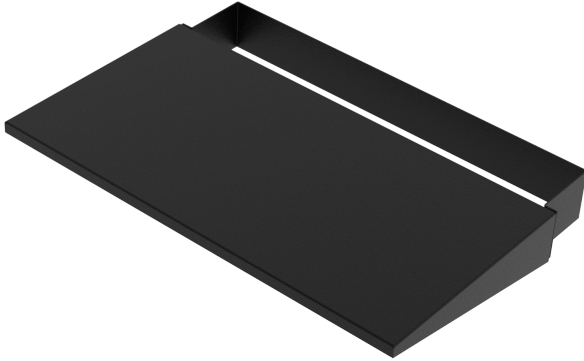


FUNC MOBILE SHELF

SKU: N/A



Func Mobile Shelf is an excellent place for accessories for your large display. It fits both Func Mobile and Func Mobile Motorized as well as Func Wall/Floor. The flexible design gives the opportunity to adjust the shelf height along the legs of the stand. When used on Func Mobile Motorized the shelf must be mounted after the display and with the motor legs in the lowest position to be sure the display cannot touch the shelf.

When using the shelf together with Func Mobile Motorized, the access to the storage box will be limited. Preferable mounting is on the back of stand.



Max weight 10
Placement Accessory

GALLERY IMAGES



VARIATIONS

SKU	Color	For Motorized Stand
C220006-4A	White	Yes
C220006-1A	Black	Yes
C220008-4A	White	No
C220008-1A	Black	No

ADDITIONAL INFORMATION

Weight	2,5 kg
Dimensions	66 × 35 × 10 cm
Color	Black, White
For Motorized Stand	No, Yes

We reserve the right to introduce changes in the product specifications after the printing and publication of this document.

Visit www.smartmediasolutions.com for the most recent information.

SMS Smart Media Solutions AB

Högbergsgatan 26B, 116 20 STOCKHOLM